

# Skate Petaluma

## Skatepark Design & Site Analysis Project

---

CITY COUNCIL

APRIL 3, 2023



# Overview

---

- Project Background
- Recap First Round of Engagement
- Site Analyses for Potential Skatepark Locations
- Design Approach, Phasing, & Cost Estimate
- Next Steps

# Background

---

- Petaluma Skatepark built in 1997; among the oldest in California
- Lacks features and standard park amenities that would encourage participation among a broader range of ages, ability levels, and user groups
- Included in FY21-23 City Council Goals and Priorities (#225)
- Design contract awarded to Grindline Skateparks, Inc. in December 2022



An aerial photograph of a skate park, showing various ramps, bowls, and rails. The image is semi-transparently overlaid with a large orange rectangle that contains the project goal text. The background image shows the intricate layout of the skate park, including concrete structures and surrounding greenery.

## Project Goal

*Partner with the community to chart the future of skating (and other related activities, such as BMX, rollerblading, and freestyle scootering) in Petaluma*

# Process / Timeline

---

## December 2022

Design Contract  
Awarded to  
Grindline  
Skateparks

## February 2023

Community Workshop #2:  
Seek feedback on site  
analysis for Kenilworth,  
Leghorn's, Lucchesi, &  
Wiseman Parks

## April 2023

City Council:  
Present update and seek  
feedback on site selection

## January 2023

Community Workshop #1  
& Survey:  
Should we focus  
investments on existing  
skate park or build a new  
skate park?

## March 2023

Recreation, Music, &  
Parks Commission:  
Present update and  
seek feedback on site  
selection

## Summer 2023

Community Workshops  
#3 & 4:  
Seek feedback on  
conceptual designs

# What We Heard: Community Workshop #1 & Online Survey

---

- Focus future investments on a new, large (~20-30k sq. ft.) skate park, rather than Petaluma Skatepark or multiple smaller skateparks
- If funding is limited, pursue a phased approach that allows the skating community to skate each phase as its completed, then build the next as funding is secured



# Site Analyses

---

# Kenilworth Park

## STRENGTHS/OPPORTUNITIES

- Sufficient footprint (assuming 1/3 of park)
- Most central of the four parks
- Accessible by all modes of transport
- Proximity to Library, Teen Center, and existing Skatepark
- Potential to be delivered with larger park redesign project

## WEAKNESSES/THREATS

- No existing lighting or restrooms
- Potential complications with larger park redesign project
- Fencing required due to adjacent roadways



# Leghorn's Park

## STRENGTHS/OPPORTUNITIES

- Popular park
- Accessible by all modes of transport
- Proximity to shopping & schools
- Existing lighting and restrooms

## WEAKNESSES/THREATS

- Insufficient footprint (comparable to existing Skatepark)
- Located on edge of City
- Fencing required due to adjacent road and sidewalks



# Lucchesi Park

## STRENGTHS/OPPORTUNITIES

- Largest available footprint
- Second-most central of the four parks
- Accessible by all modes of transport
- Popular park
- Proximity to schools, shopping, youth activities
- Existing lighting and restrooms
- No need for fencing
- Potential to incorporate berms and trees

## WEAKNESSES/THREATS

- Limited parking when park is busy
- Trees will require ongoing maintenance



# Wiseman Park

## STRENGTHS/OPPORTUNITIES

- Sufficient footprint
- Flat site without constraints
- Existing restrooms
- No need for fencing

## WEAKNESSES/THREATS

- Located on edge of City
- Not accessible by transit
- Located in residential area; not near shopping or schools
- No existing lighting



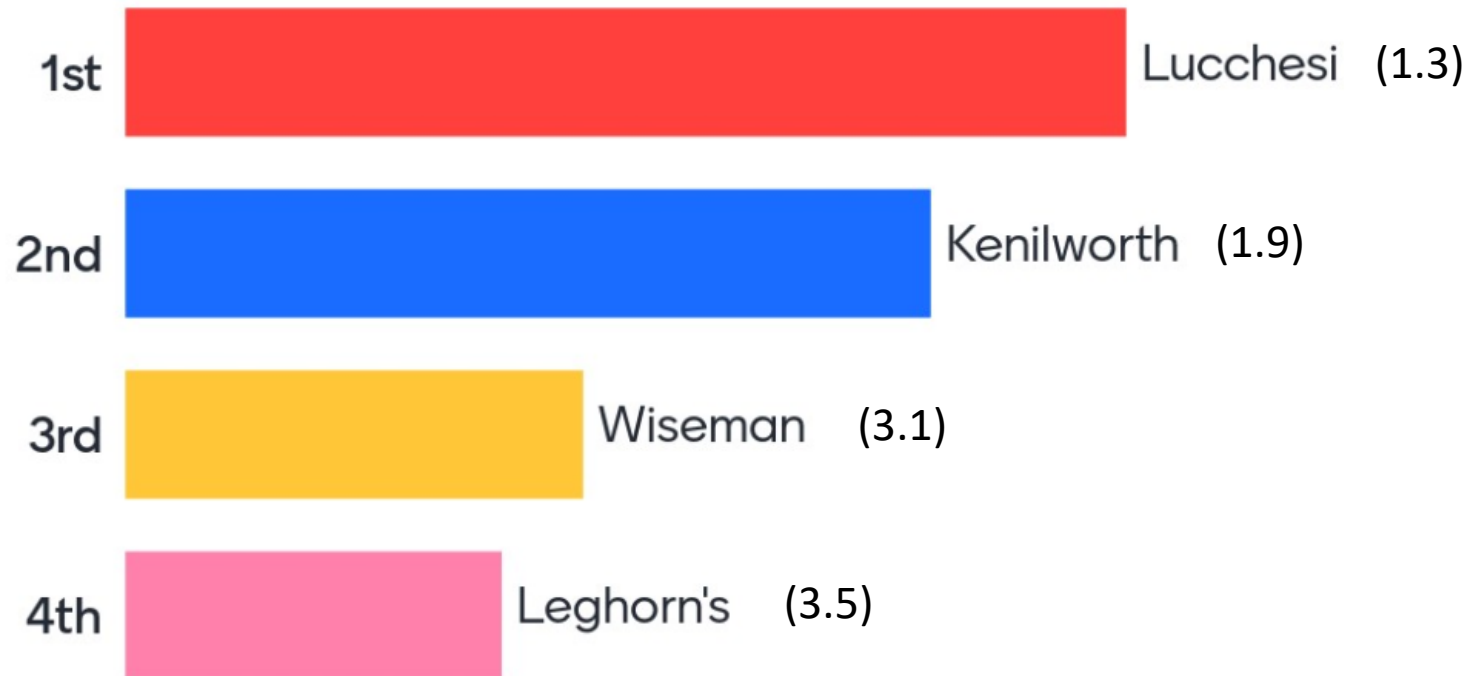
## SITE ANALYSIS SUMMARY

Park	Approximate Available Area (SQ FT)	Existing Restroom	Existing Lighting	Fencing Needed	Location Description
Kenilworth	22,000	No	No	Yes	Most central of the proposed sites. Located near Skate Park, Regional Library, and Teen Center. Accessible by transit.
Leghorn's	14,000	Yes	Yes	Yes	Not central. Popular park near several schools and shopping center. Accessible by transit.
Lucchesi	54,000	Yes	Yes	No	Second most central location. Popular park near school, Boys & Girls Club, and shopping areas. Accessible by transit and Lynch Creek Trail.
Wiseman	37,000	Yes	No	No	Not central. Located in residential area. Not accessible by transit.

# What We Heard:

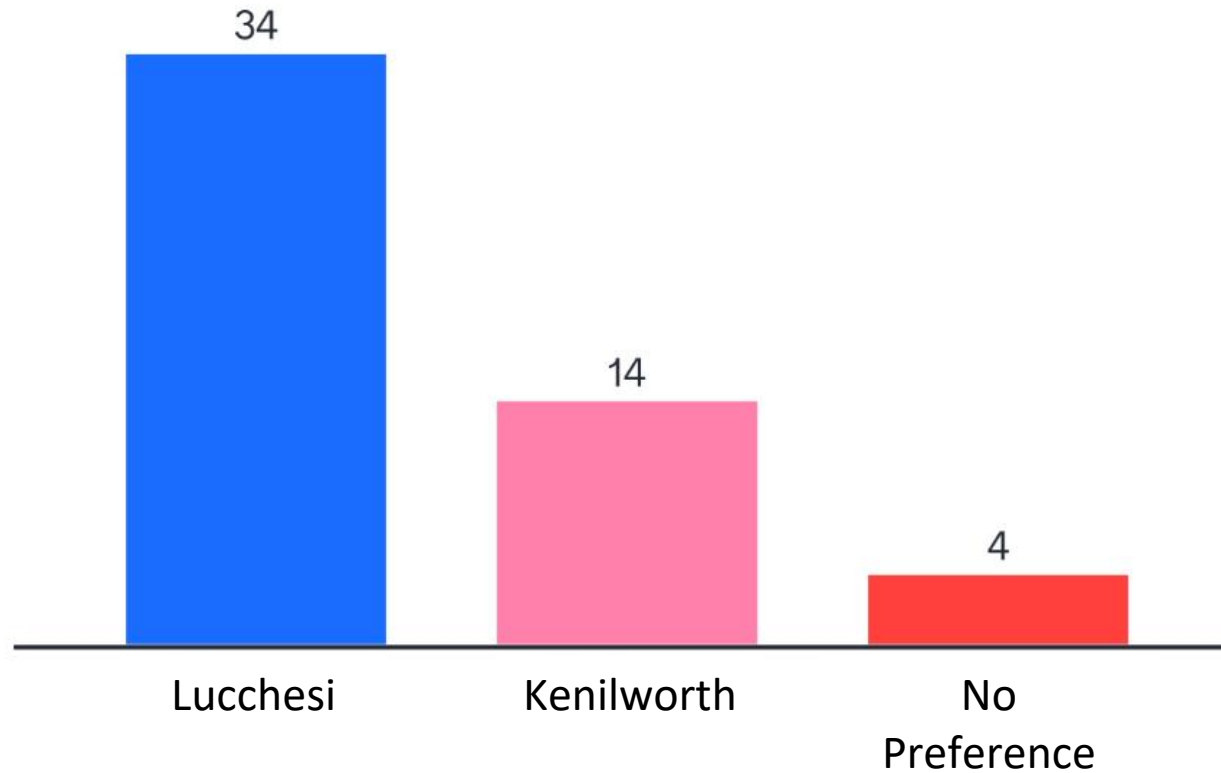
## Community Workshop #2 (Q1: Rank parks)

---



# What We Heard: Community Workshop #2 (Q2: Choose between top two parks)

---



# What We Heard:

## March 15 Recreation, Music, & Parks Commission

---

- Unanimous support for project and pursuit of a new skatepark at Lucchesi Park
- Concerns around lengthy phased buildout
- Desire to preserve and incorporate existing trees into design



# Design Approach & Phasing

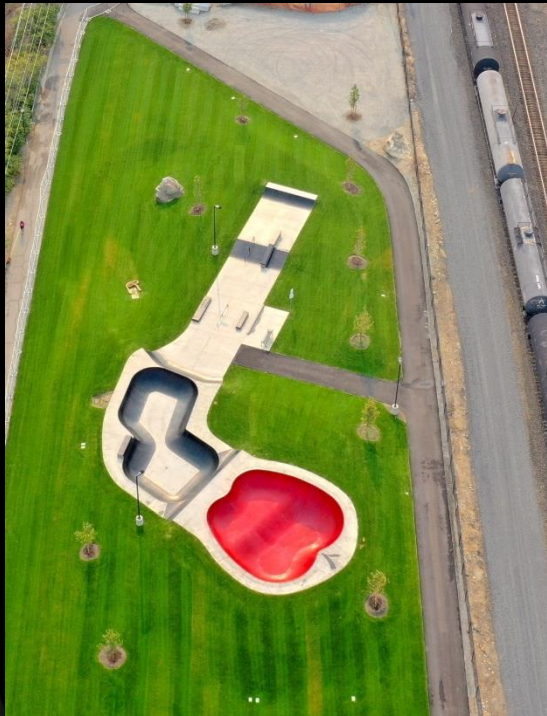
---

## ABOUT GRINDLINE

**Grindline Skateparks is a Design/Build firm that specializes in concrete cast in place Skateparks.**



**ABOUT GRINDLINE**



## **DESIGN PHILOSOPHY**

- Organic Flow
- Ladder of Progression
- Integration & Context



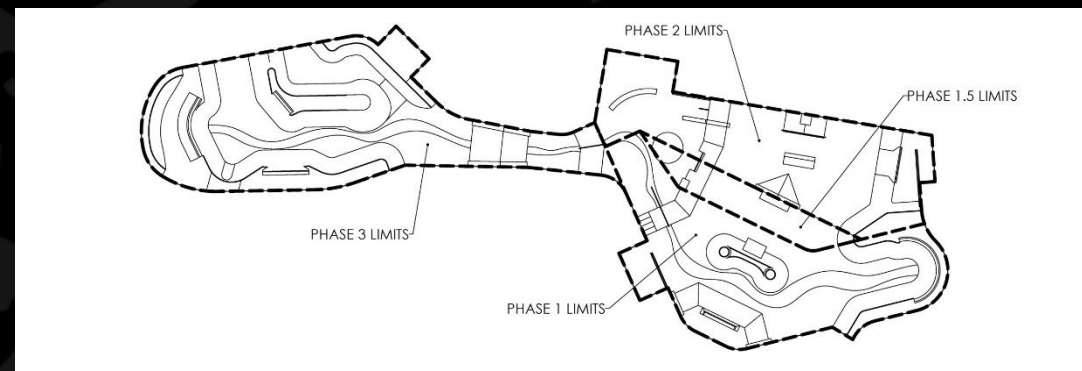
## DESIGN PHILOSOPHY



## DESIGN PHILOSOPHY

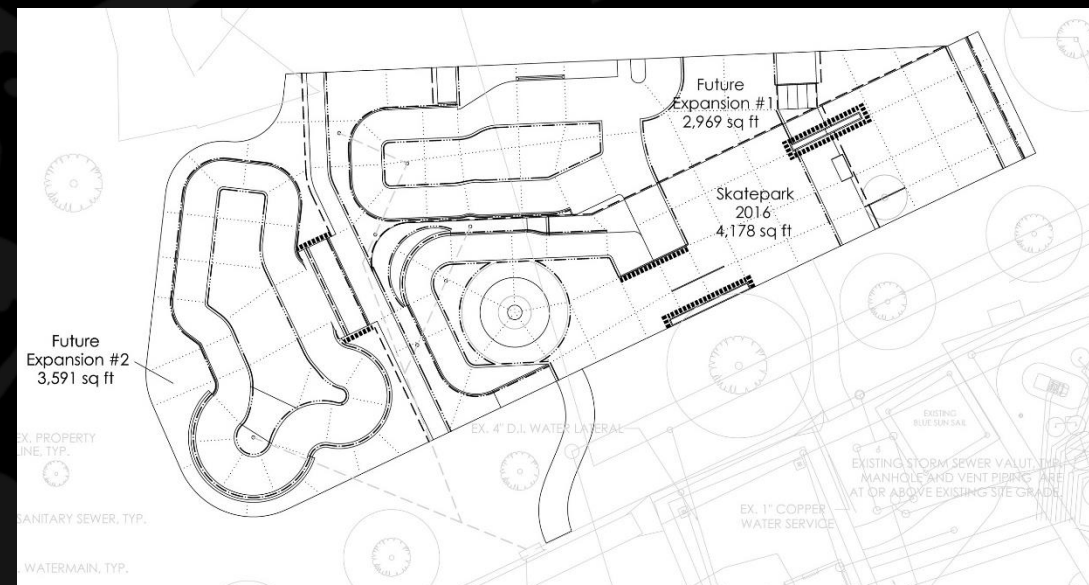


## **PHASED BUILD EXAMPLE – MANCHESTER, VT – 3.5 PHASES**



**Phase 1 – 6,000 SQ FT**  
**Phase 1.5 – 1,500 SQ FT**  
**Phase 2 & 3 – 10,000 SQ FT**

## **PHASED BUILD EXAMPLE – PORTAGE, WI – 3 PHASES**



**Phase 1 – 4,000 SQ FT**  
**Phase 2 – 3,000 SQ FT**  
**Phase 3 – 3,500 SQ FT**

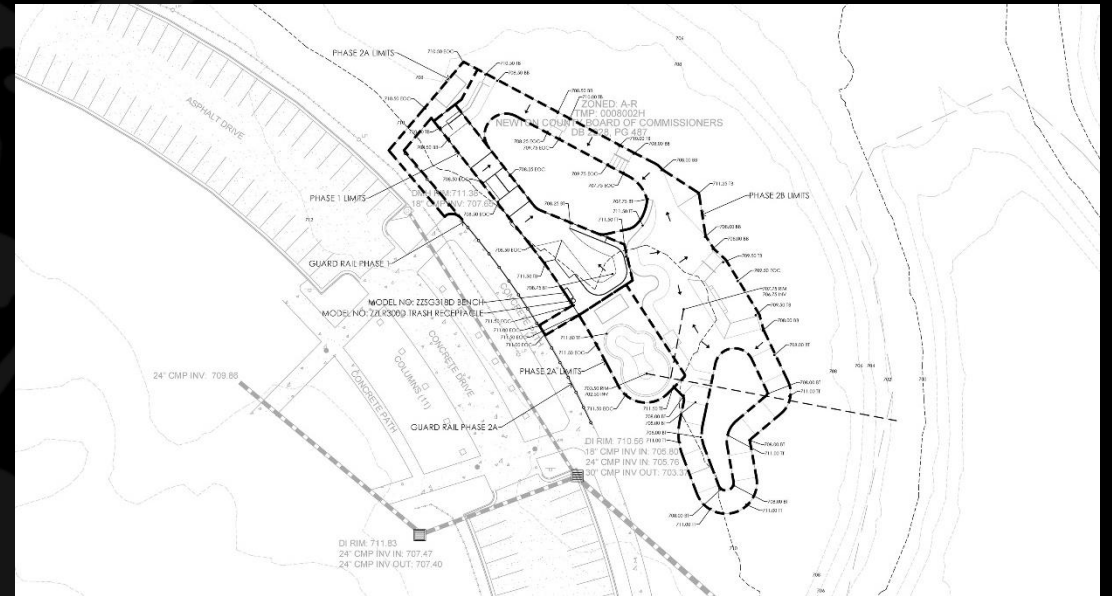
**PHASED BUILD EXAMPLE – WINTER PARK, CO – 2 PHASES**



**Phase 1 – 8,000 SQ FT**

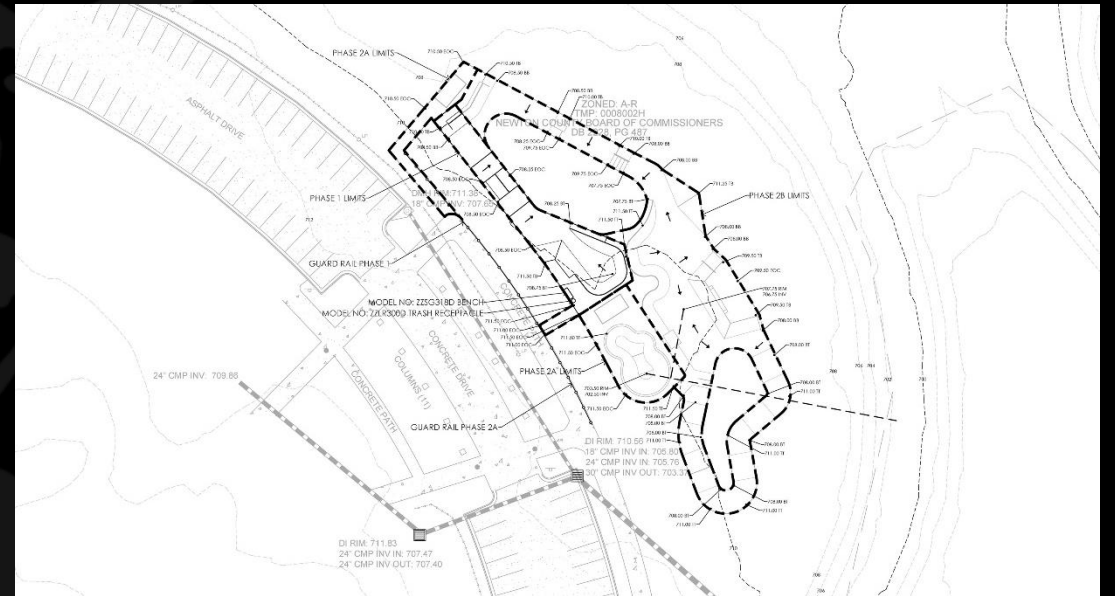
**Phase 2 – 6,000 SQ FT**

## The image consists of two aerial photographs of a park design. The top photograph shows a long, winding concrete path that curves through a green lawn. The path is composed of light gray and tan-colored sections. A person is riding a bicycle on the path, and another person is walking. A bench and a trash can are also visible. The bottom photograph shows a more complex layout with a central paved area, a large green lawn, and a winding path. The path has a bench and a trash can. There are also some trees and a small structure in the background.



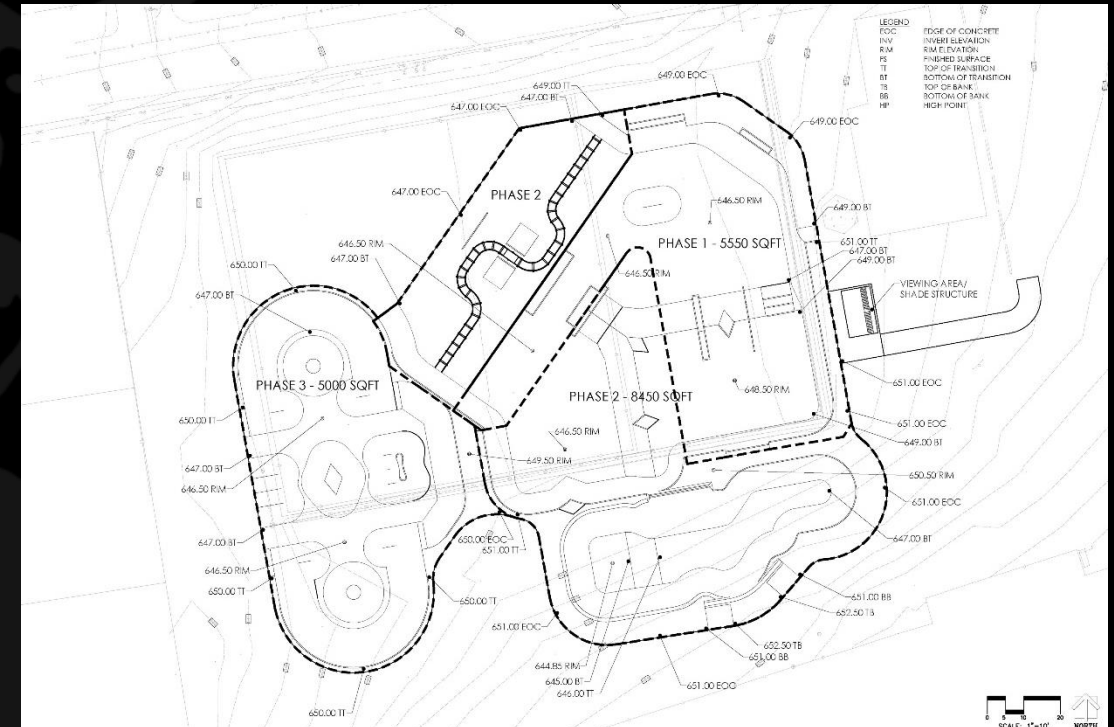
# PETALUMA SKATEPARK

## The image consists of two aerial photographs of a park design. The top photograph shows a long, winding concrete path that curves through a green lawn. The path is composed of light gray and tan-colored sections. A person is riding a bicycle on the path, and another person is walking. A bench and a trash can are also visible. The bottom photograph shows a more complex layout with a central paved area, a large green lawn, and a winding path. The path has a bench and a trash can. There are also some trees and a small structure in the background.



# PETALUMA SKATEPARK

## PHASED BUILD EXAMPLE – BLACK DIAMOND, WA – 4 PHASES



**Phase 1 – 5,500 SQ FT**  
**Phase 2 – 8,500 SQ FT**  
**Phase 3 – 5,000 SQ FT**  
**Phase 4 – 5,000 SQ FT**

**PHASED BUILD EXAMPLE**

**Phase 1 –  
3,000 SQ FT**

**Phase 2 –  
10,000 SQ FT**

**Phase 3 –  
10,000 SQ FT**

# Proposed Phasing / Cost Estimates

## Petaluma Skatepark

### Estimate of Probable Construction Cost

3/29/2023

23,000 SQFT

ITEM NO.	DESCRIPTION	QUANTITY	UNIT	UNIT PRICE	SUBTOTAL
1	Phase 1	3,000	S.F.	\$100.77	\$302,309.26
2	Phase 2	10,000	S.F.	\$85.40	\$854,019.12
3	Phase 3	10,000	S.F.	\$85.40	\$854,019.12

SUB - TOTAL ESTIMATE OF PROBABLE CONSTRUCTION COST= \$2,010,347.50

<b>Project Contingency</b>					
4	5% of Project Total	1	LS	\$100,517.37	\$100,517.37

TOTAL ESTIMATE OF PROBABLE CONSTRUCTION COST= \$2,110,864.87

# Next Steps

---

- Prepare conceptual designs for proposed site
- Develop phasing plan and explore public/private partnerships and funding opportunities
- Majority of \$463,000 approved budget will be needed for project development (community engagement, planning, design, permitting, etc.)
- Explore upgrades to Petaluma Skatepark that make it more user-friendly and accessible without diverting funds from budget for new skatepark



*Riverside Skatepark (Detroit, MI) - Designed & Constructed by Grindline*

# Process / Timeline

---

## December 2022

Design Contract  
Awarded to  
Grindline  
Skateparks

## February 2023

Community Workshop #2:  
Seek feedback on site  
analysis for Kenilworth,  
Leghorn's, Lucchesi, &  
Wiseman Parks

## April 2023

City Council:  
Present update and seek  
feedback on site selection

## January 2023

Community Workshop #1  
& Survey:  
Should we focus  
investments on existing  
skate park or build a new  
skate park?

## March 2023

Recreation, Music, &  
Parks Commission:  
Present update and  
seek feedback on site  
selection

## Summer 2023

Community Workshops  
#3 & 4:  
Seek feedback on  
conceptual designs

Learn More &  
Subscribe to  
Project Updates!

[cityofpetaluma.org/skatepetaluma](https://cityofpetaluma.org/skatepetaluma)

Bjorn Gripenburg, Project Manager

[bgripenburg@cityofpetaluma.org](mailto:bgripenburg@cityofpetaluma.org)